



Kraftwerk1 Heizenholz

Zürich-Höngg

2009-2011, Erweiterung

Adrian Streich (Projektleitung)

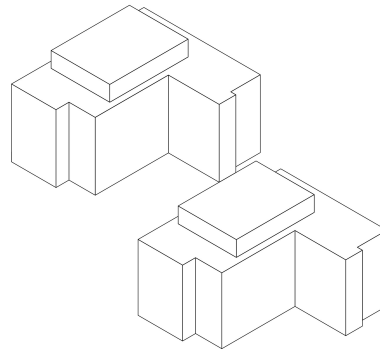
Studienauftrag auf Einladung, 1. Preis

Kraftwerk1 Heizenholz

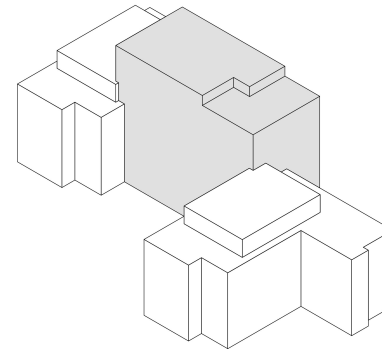


Kraftwerk1 Heizenholz

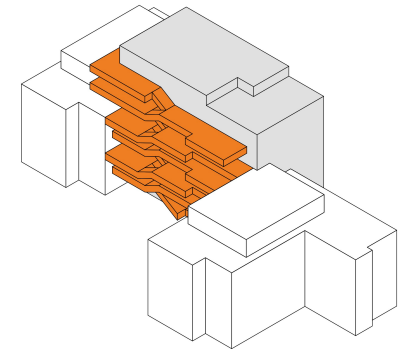
- K1 building **cooperative**
- 2nd development of K1
- Multi-generational building
 - 26 apartments
 - 125 sq. m. workspace
 - 3350 sq. m. total
- 2 unique architectural features:
 - 7 floor **communal terrace**
 - 2 large **cluster apts** - 330 sq. m. each - for “dignified” flatsharing
- 36 sq. m. p.p. average / Zurich (40), Switzerland (50)
- **Adrian Streich** won competition to transform 2-1970s buildings with many small rooms into a co-housing project.
- He connected them with a new 7-story building.



Bestandsgebäude



verbindender Mitteltrakt



mit Terrasse Commune

Kraftwerk1 Heizenholz

Program:

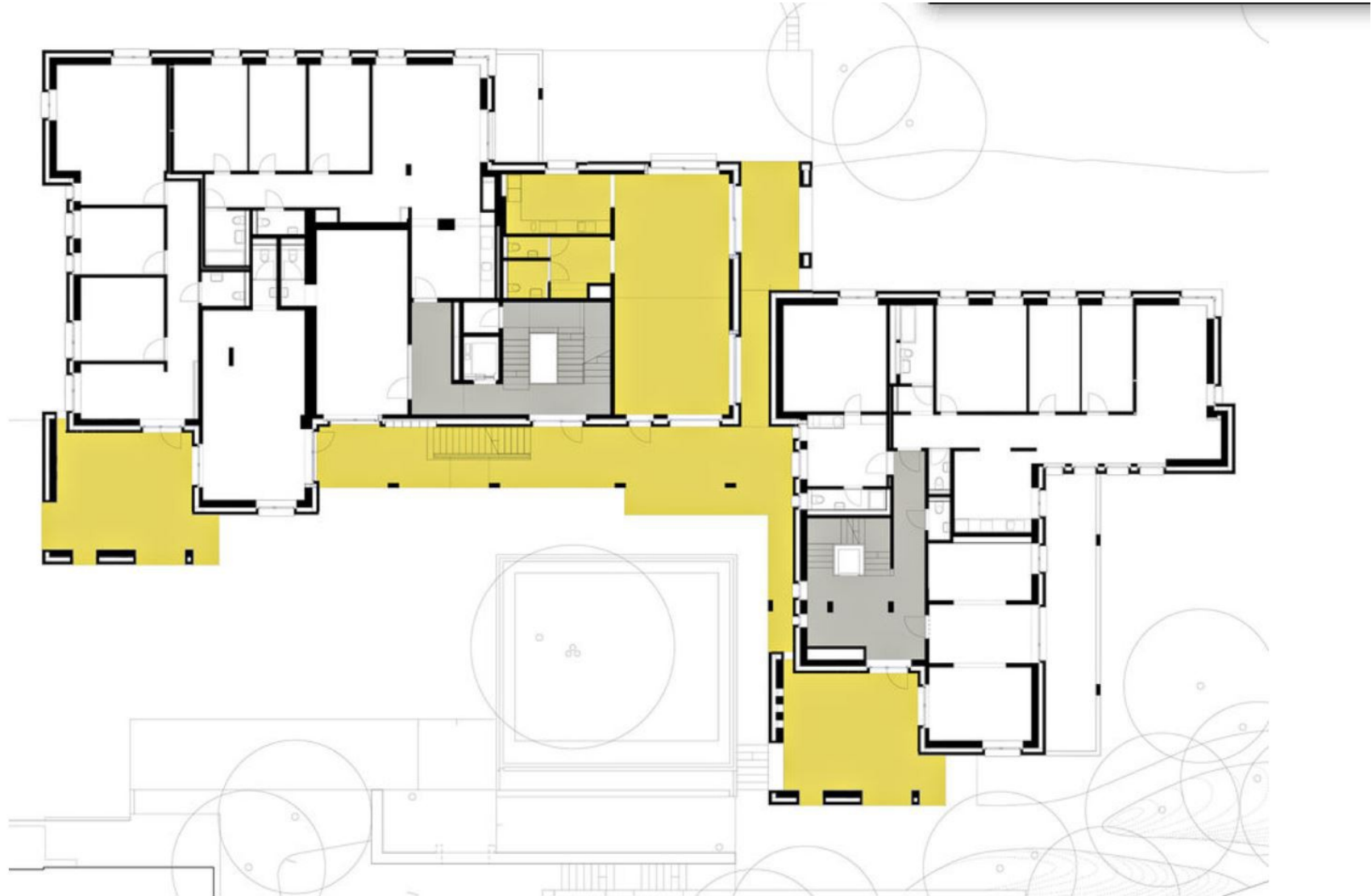
- Basement:
 - Hobby rooms
 - music room
 - laundry
 - bike room
 - co-op storage
- Ground floor:
 - Communal room and kitchen
 - Work rooms
 - 3 studios/offices
 - 2 apartments
 - satellite
- 1st floor
 - 5 apartments
 - Rental room
 - Satellite
- 2nd and 3rd floors
 - **Cluster apt**
328 sq. m.
 - communal apt.
254 sq. m.
 - 2 apartments
- 4th floor
 - 4 apartments
- 5th floor
 - Guest room
 - 2 apartments
- 6th floor
 - 2 apartments
 - Satellite
- **NO parking garage**
 - Good public transport
 - Easily accessible bike room

Kraftwerk1 Heizenholz

- **Ground floor** connects to the street
- One can pass under the building from the street to a garden of fruit trees.
- Easy access to the day care center on the ground floor.
- Features large communal terrace.



Kraftwerk1 Heizenholz



Kraftwerk1 Heizenholz

- The **terraces** form the core of the project.
- They join the old and new buildings.
- Begin at ground level and pass all apartments up to roof.
- Can be used by all and furnished because they are not fire escapes.
- Of various sizes and locations, some more secluded.
- Views over the city, the Limmat valley and the nearby forest.



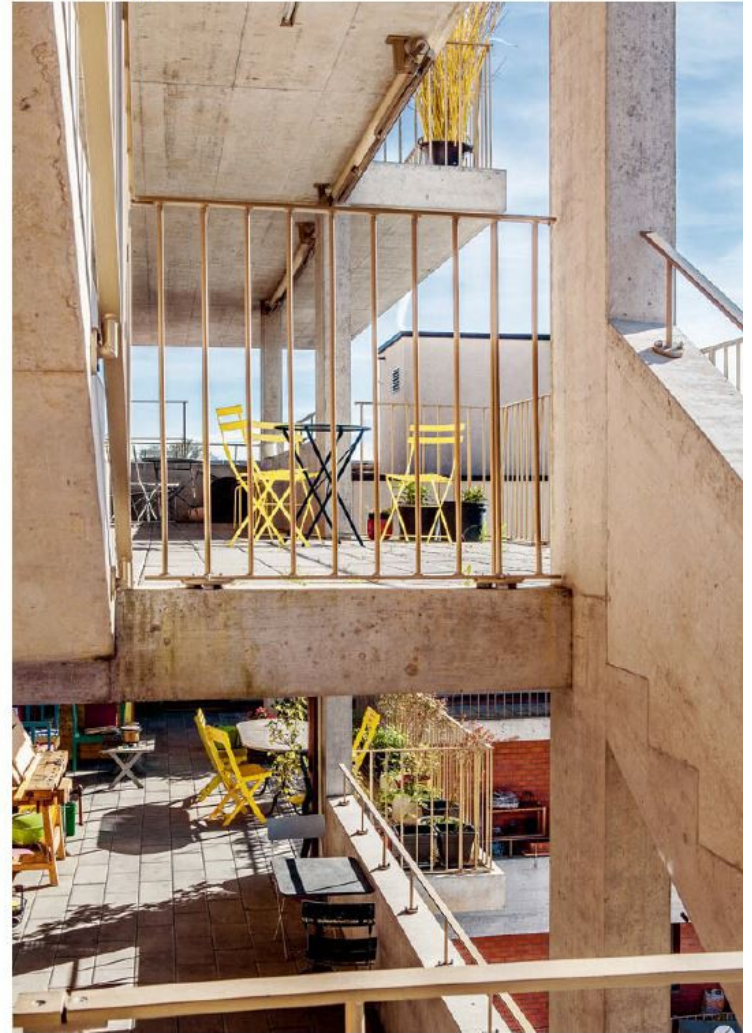
Kraftwerk1 Heizenholz



Kraftwerk1 Heizenholz



Foto: Stephan Rappo



Kraftwerk1 Heizenholz

- The **cluster apartment** is 330 sq. m.
- Large communal kitchen, dining, living and working area
- Individual spaces vary from one bedroom to small apartments with their own small kitchen units, bathrooms and sitting areas.
- Communal spaces open to the terraces
- More private spaces face the quiet forest side.
- “luxurious” WG
- Flexibility attractive to all age groups and living situations.



Kraftwerk1 Heizenholz

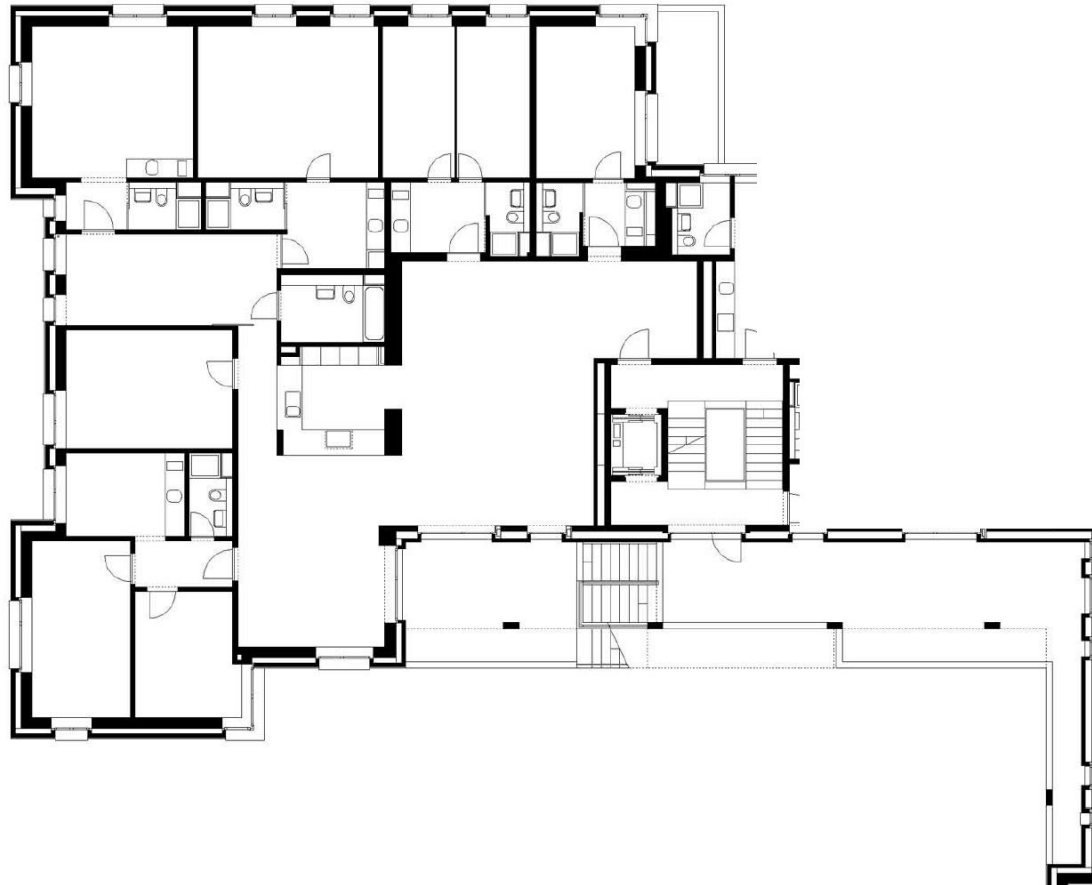
Kraftwerk1
Bau- und Wohngenossenschaft



Grundriss 2. Obergeschoss

Kraftwerk1 Heizenholz

Kraftwerk1
Bau- und Wohngenossenschaft



Grundriss 2. Obergeschoss



BEWOHNER 3. OBERGESCHOSS

Wohngemeinschafts-Cluster

Gemeinschaftsbereich/Küche/Bad 135 qm

Einheit 1: 49 qm, Paar 52 und 56 Jahre, sie im sozialen Bereich tätig, er als Hauswart

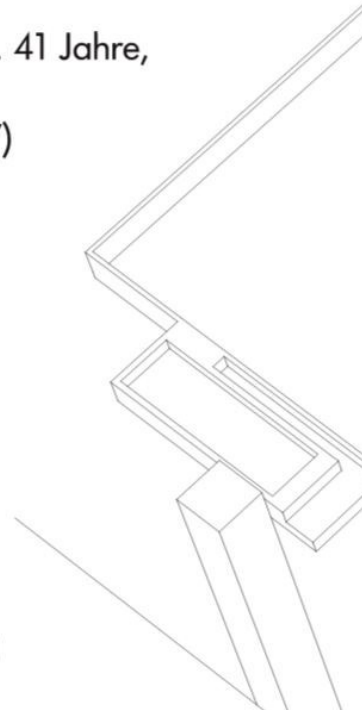
Einheit 2: Zusatzzimmer 20 qm, männl. 38 Jahre, Informatiker

Einheit 3: 31 qm, weibl. 52 Jahre, im kulturellen Bereich tätig

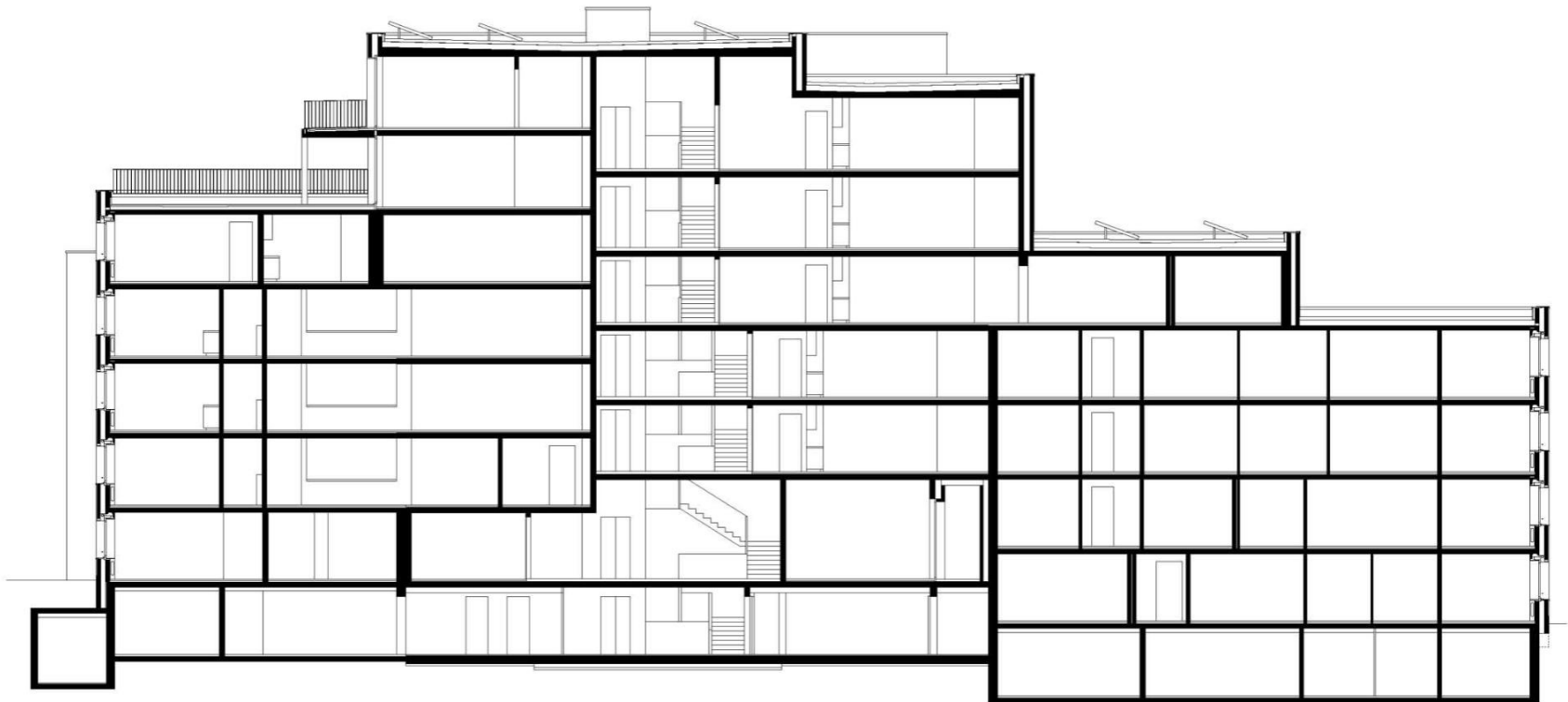
Einheit 4: 39 qm, weibl. 41 Jahre, im Bauwesen tätig (Paar mit WG Zimmer 7)

Einheit 5: 31 qm, Paar 41 und 44 Jahre, 1 Kind/Mädchen sie im Bildungswesen, er als Historiker tätig

Einheit 6: 22 qm weibl. 39 Jahre, 1 Kind/Junge, im Gesundheitssektor tätig



Kraftwerk1 Heizenholz



Longitudinal section

Kraftwerk1

Bau- und Wohngenosenschaft

private

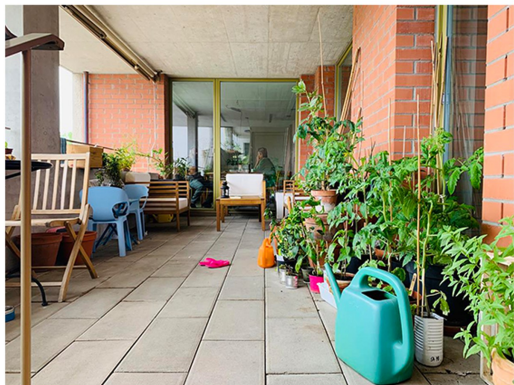
public

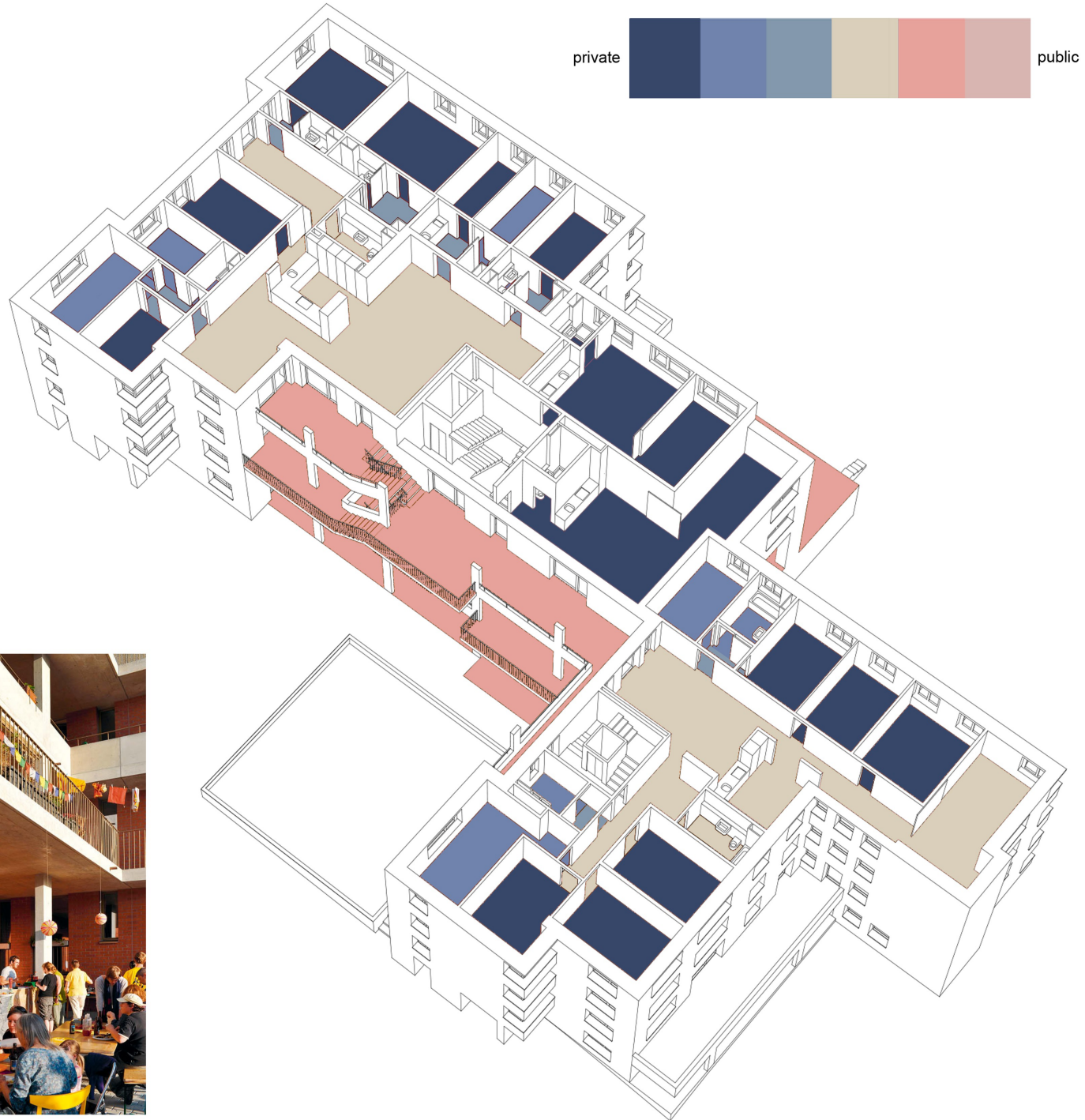


Cluster-Wohngemeinschaft 2.OG

Kraftwerk1

Bau- und Wohngenossenschaft



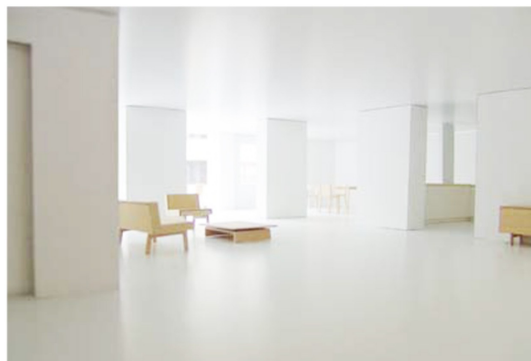


Kraftwerk1

Bau- und Wohngenossenschaft

private

public



Cluster-Wohngemeinschaft 2.OG

Sources:

<https://www.kraftwerk1.ch/heizenholz/siedlung.html>

<http://www.adrianstreich.ch/werkliste/>

https://www.kraftwerk1.ch/assets/downloads/publikationen/siedlungen/Heizenholz/1411_Arch_218_Kraftwerk1%20Heizenholz.pdf

https://www.world-architects.com/img/frontend/pages/files/brosch_kraftwerk2_rz.pdf